

Alumni Outcomes

	Graduation Year																			
	2004		2005		2006		2007		2008 *		2009		2010		2011		2012		2013	
	#	%	#	%	#	%	#	%	#	%	#	%	#	%	#	%	#	%	#	%
# of Graduates Surveyed	1,084		1,084		1,141		1,152		1,155		1,274		1,210		1,148		1,119		1,088	
Number of Surveys Completed	223	20.6%	410	37.8%	447	39.2%	430	37.3%	256	22.2%	296	23.2%	439	36.3%	292	25.4%	331	29.6%	360	33.1%
Employment Status																				
Full-Time	153	68.6%	336	82.0%	327	73.2%	316	73.5%	184	71.9%	184	62.2%	264	60.1%	204	69.9%	205	61.9%	224	62.2%
Also Pursuing Education									48	18.8%	17	5.7%	12	2.7%	58	19.9%	43	13.0%	63	17.5%
Part-Time	21	9.4%	33	8.0%	49	11.0%	16	3.7%	37	14.5%	40	13.5%	74	16.9%	40	13.7%	66	19.9%	60	16.7%
Also Pursuing Education									17	6.6%	9	3.0%	26	5.9%	24	8.2%	40	12.1%	27	7.5%
Total	174	78.0%	369	90.0%	376	84.1%	332	77.2%	221	86.3%	224	75.7%	338	77.0%	244	83.6%	271	81.9%	284	78.9%
Graduate Study/Continuing Education ONLY																				
Studying Full-Time	28	12.6%	43	10.5%	65	14.5%	54	12.6%	20	7.8%	45	15.2%	68	15.5%	26	8.9%	42	12.7%	40	11.1%
Studying Part-Time	4	1.8%	63	15.4%	46	10.3%	41	9.5%	2	0.8%	0	0.0%	0	0.0%	1	0.3%	2	0.6%	13	3.6%
Total	32	14.3%	106	25.9%	111	24.8%	95	22.1%	22	8.6%	45	15.2%	68	15.5%	27	9.2%	44	13.3%	53	14.7%
Total Continuing Education	32	14.3%	106	25.9%	111	24.8%	95	22.1%	87	34.0%	71	24.0%	106	24.1%	109	37.3%	127	38.4%	143	39.7%
Employed/Pursuing Additional Education									243	94.9%	269	90.9%	406	92.5%	271	92.8%	315	95.2%	337	93.6%
Employment Relationship to Field of Study																				
Related to Field	118	52.9%	251	61.2%	284	63.5%	272	63.3%	88	34.4%	102	34.5%	148	33.7%	120	41.1%	129	39.0%	139	38.6%
Somewhat Related to Field	34	15.2%	54	13.2%	28	6.3%	49	11.4%	70	27.3%	73	24.7%	106	24.1%	82	28.1%	87	26.3%	90	25.0%
Outside of Field	22	9.9%	60	14.6%	63	14.1%	35	8.1%	28	10.9%	36	12.2%	52	11.8%	31	10.6%	45	13.6%	35	9.7%
Unemployment																				
Engaged in Volunteer Services	3	1.3%	2	0.5%	0	0.0%	0	0.0%	1	0.4%	8	2.7%	1	0.2%	0	0.0%	3	0.9%	2	0.6%
Seeking Employment	7	3.1%	8	2.0%	24	5.4%	12	2.8%	11	4.3%	16	5.4%	29	6.6%	14	4.8%	9	2.7%	19	5.3%
Not Seeking Employment	0	0.0%	1	0.2%	2	0.4%	1	0.2%	1	0.4%	3	1.0%	3	0.7%	7	2.4%	4	1.2%	2	0.6%
Total	10	4.5%	11	2.7%	26	5.8%	13	3.0%	13	5.1%	27	9.1%	33	7.5%	21	7.2%	16	4.8%	23	6.4%

2012-2013 Graduates were surveyed 9 months after graduation. 2003-2007, 2009-2010 Graduates are surveyed approximately six months after graduation. Information shown is self-reported.

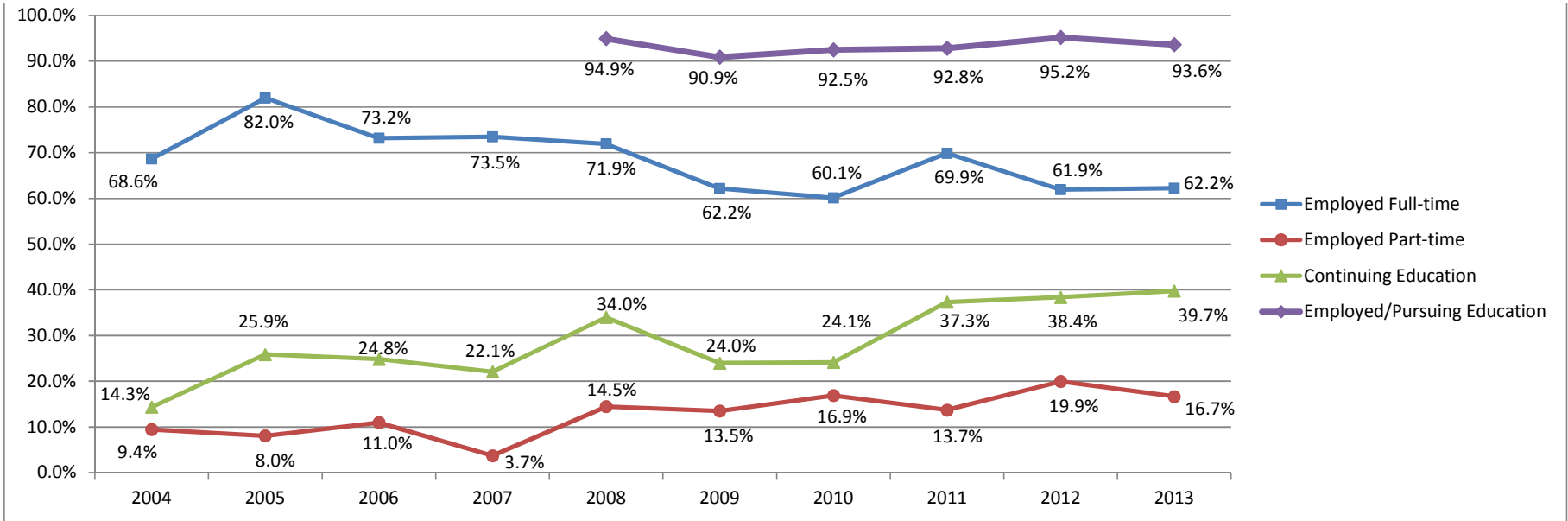
The 2011 survey was conducted approximately 2 years after graduation. Those that answered "already continued my education" for the 2011 survey were assumed to be full-time. Employment figures are based on those students that received a job within 1 year of graduating.

Until 2004, graduates were contacted by phone. In 2005, 2006 and 2007 students received a combination of mail and email surveys. In 2008, students received only an email invitation. In 2009, students received email invitation, email reminder and poster card reminder. In 2010, students received email invitation and reminders. For the data within section Employment Relationship to Field of Study for 2010, we carried over the percentage from last year. This reflects the latest data available.

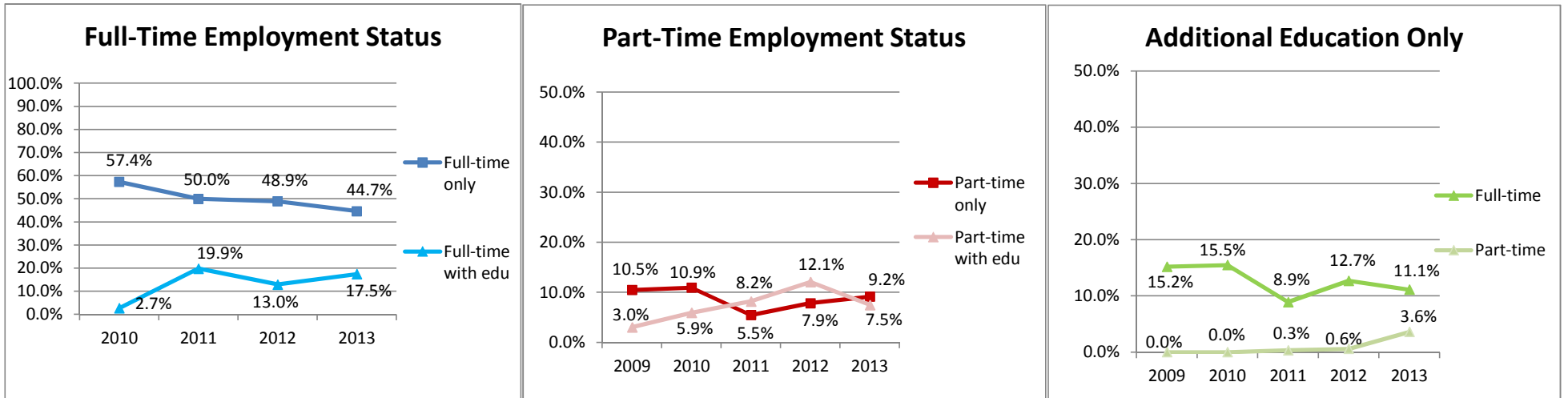
Figures are based on the number of completed surveys, not the total number of graduates.

* Responses from 2008 5-year Alumni survey conducted in 2013 were combined with results from the 2008 Alumni Outcome survey. Responses may not be statistically representative. There were 92 responses from the original outcomes survey in 2008.

Alumni Outcome Survey Summary



Source: Alumni Outcomes Survey



Source: Alumni Outcomes Survey

