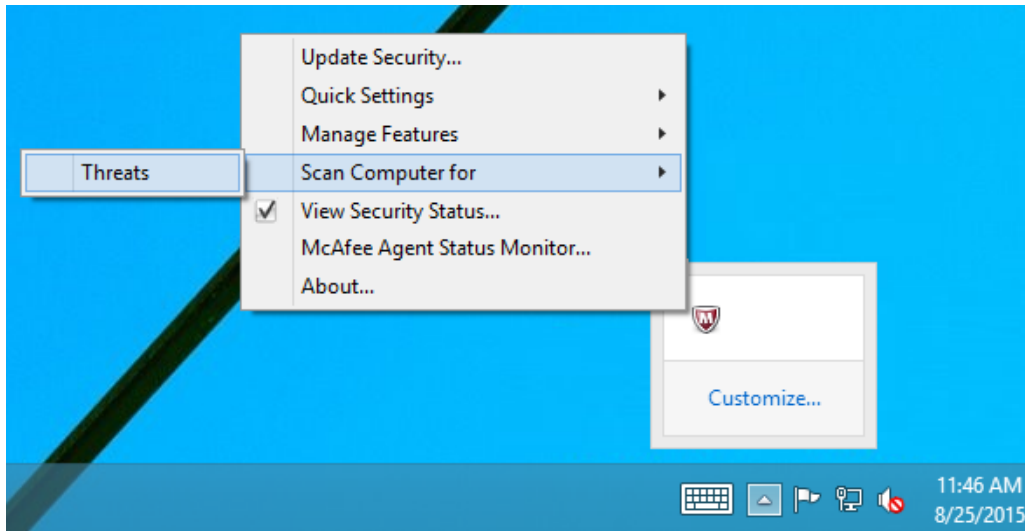


How To Manually Run a Full System Scan

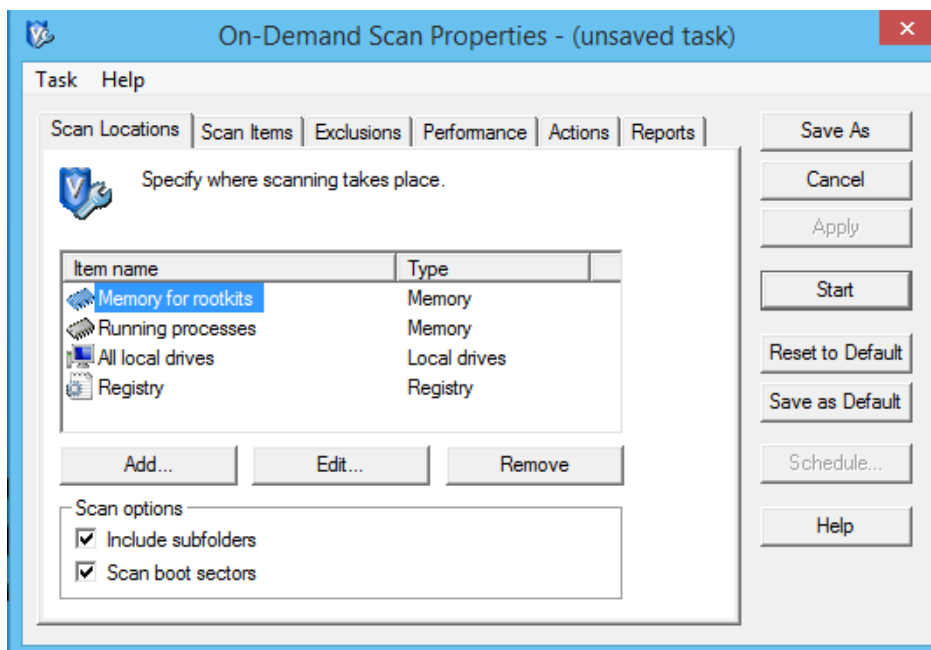
This guide provides a walkthrough on running a full virus scan using the Marist-provided McAfee VirusScan Enterprise.

1. **Right-click** the red McAfee shield on the System Tray (near the clock).
Point to **Scan Computer For** and click **Threats**.



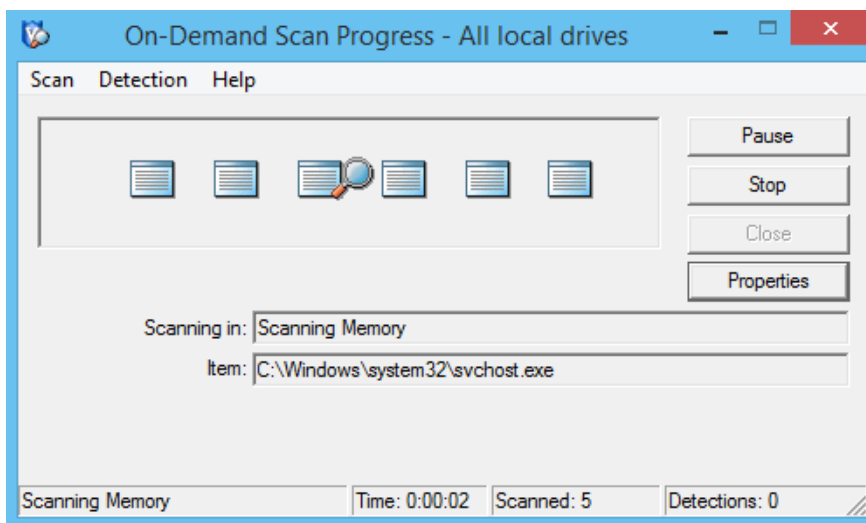
How To Manually Run a Full System Scan (cont'd)

- The **On-Demand Scan Properties** window opens. Click the **Start** button on the right pane to begin the scan.



← **Start** will start the scan

- The scan of memory and hard disks will begin. The scan may take over an hour depending on the speed of your computer and the number of files to be scanned.



At the end of the scan, any infections will be listed along with the remediation action taken (e.g., quarantined, deleted, or cleaned).

You should reboot the machine after completing the scan.