

Hilma af Klint 1862- 1944 Swedish





Blooming Fruit Tree 1893



Late Summer 1903



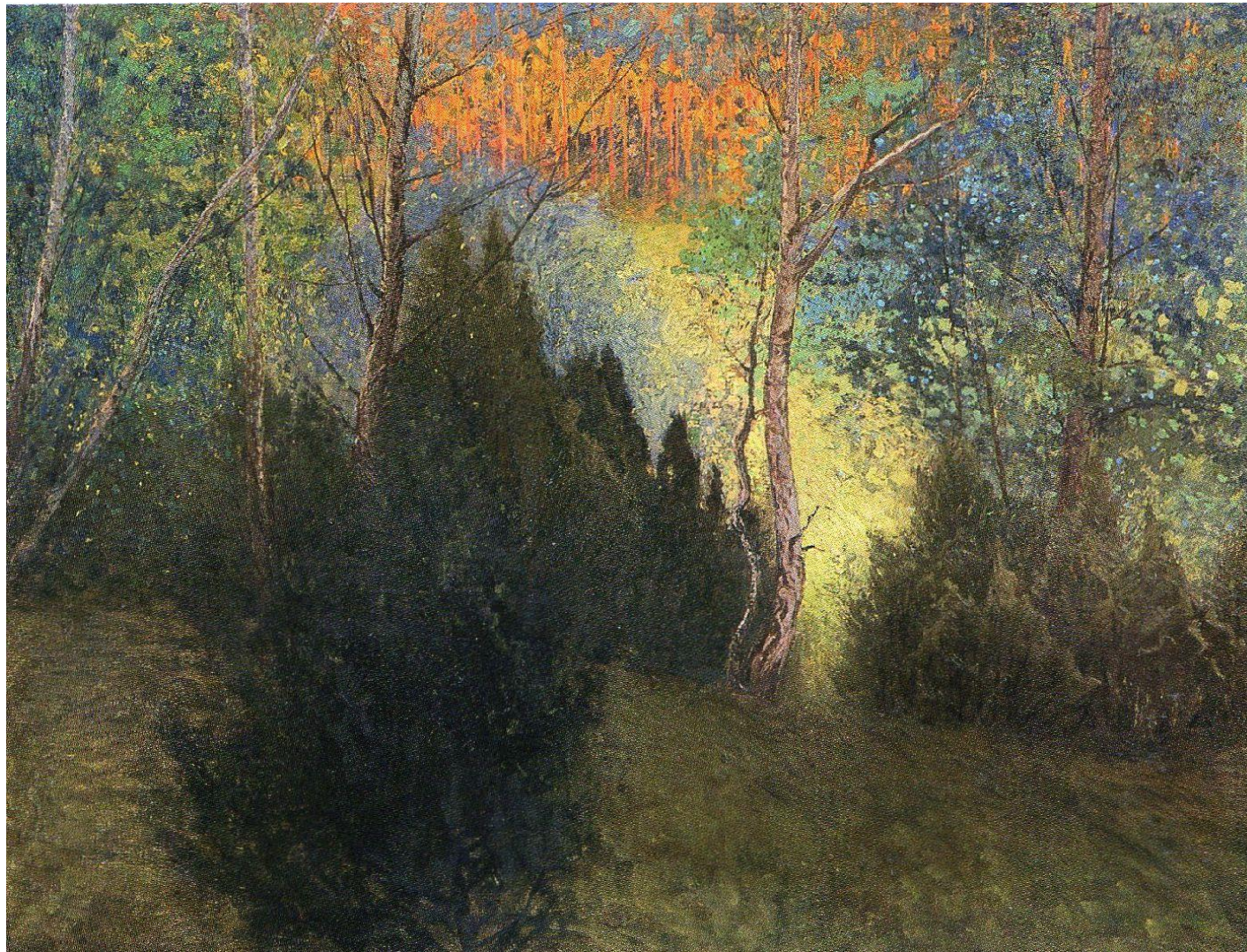








Evening Peace 1907



The pictures were painted directly through me, without preliminary drawings and with great power. I had no idea what the pictures would depict and still I worked quickly and surely without changing a single brush-stroke.

Hilma af Klint





KLINT'S SYMBOLS

- SPIRAL=EVOLUTION
- DISC = UNITY [ALSO TEMPLE]
- U = SPIRITUAL WORLD AND WOMAN
- W =MAN AND MATTER
- TRIANGLE = FREE OF EGO UPWARD TOWARD HIGHER POWER
- YELLOW =MAN
- BLUE = WOMAN
- GREEN =COMBINING 2 COLORS INTO HARMONIOUS GREEN
- WHITE IS THE HOLIEST OF COLORS

Primordial Chaos #2 1906



Primordial Chaos #7 1906-7



PRIMORDIAL CHAOS #7 1906-7





Primordial Chaos #16 1906-7









Kandinsky Cossacks -1910



Kandinsky Composition #5

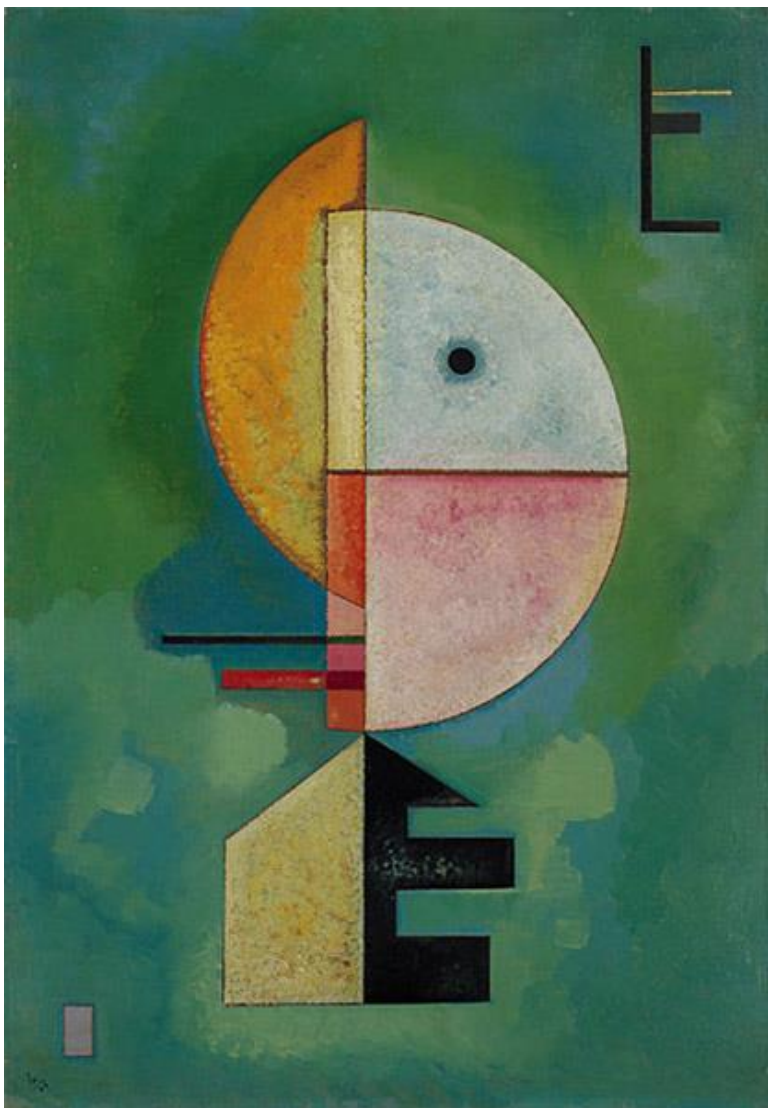


Kandinsky 1913



COMPOSITION VI 1914





Kandinsky Improvisation #23



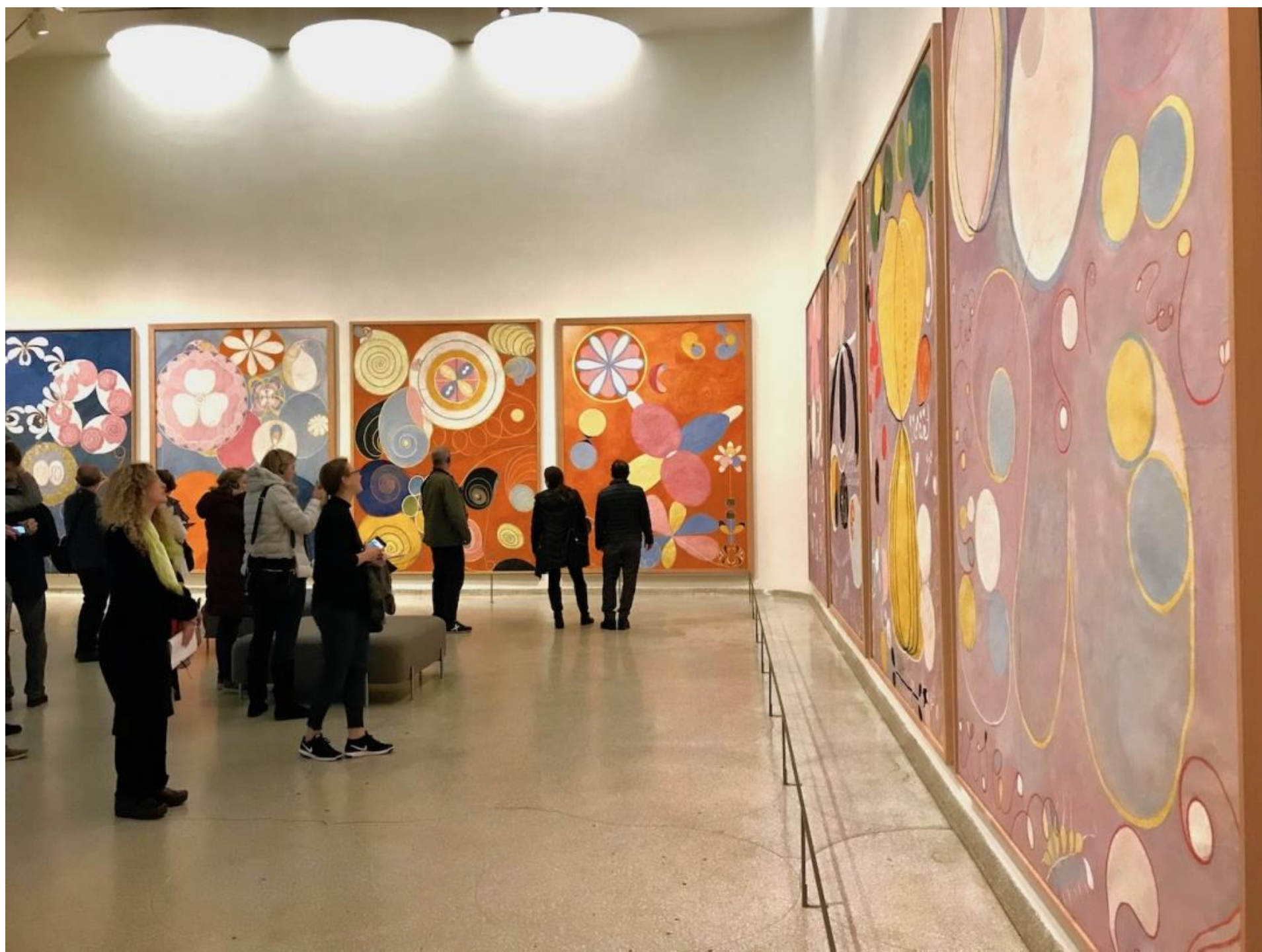
Kandinsky Several Circles 1926



KLINT'S SYMBOLS

- SPIRAL=EVOLUTION
- DISC = UNITY [ALSO TEMPLE]
- U = SPIRITUAL WORLD AND WOMAN
- W =MAN AND MATTER
- TRIANGLE = FREE OF EGO UPWARD TOWARD HIGHER POWER
- YELLOW =MAN
- BLUE = WOMAN
- GREEN =COMBINING 2 COLORS INTO HARMONIOUS GREEN
- WHITE IS THE HOLIEST OF COLORS





CHILDHOOD 1907



Childhood 1907



YOUTH 1907-8



Youth 1907



MATURITY 1908



ADULTHOOD 1907-8



Adulthood 1907



MATURITY 1907-8



Old Age 1908



OLD AGE 1908



KLINT'S SYMBOLS

- SPIRAL=EVOLUTION
- DISC = UNITY [ALSO TEMPLE]
- U = SPIRITUAL WORLD AND WOMAN
- W =MAN AND MATTER
- TRIANGLE = FREE OF EGO UPWARD TOWARD HIGHER POWER
- YELLOW =MAN
- BLUE = WOMAN
- GREEN =COMBINING 2 COLORS INTO HARMONIOUS GREEN
- WHITE IS THE HOLIEST OF COLORS

GUGGENHEIM MUSEUM RAMP





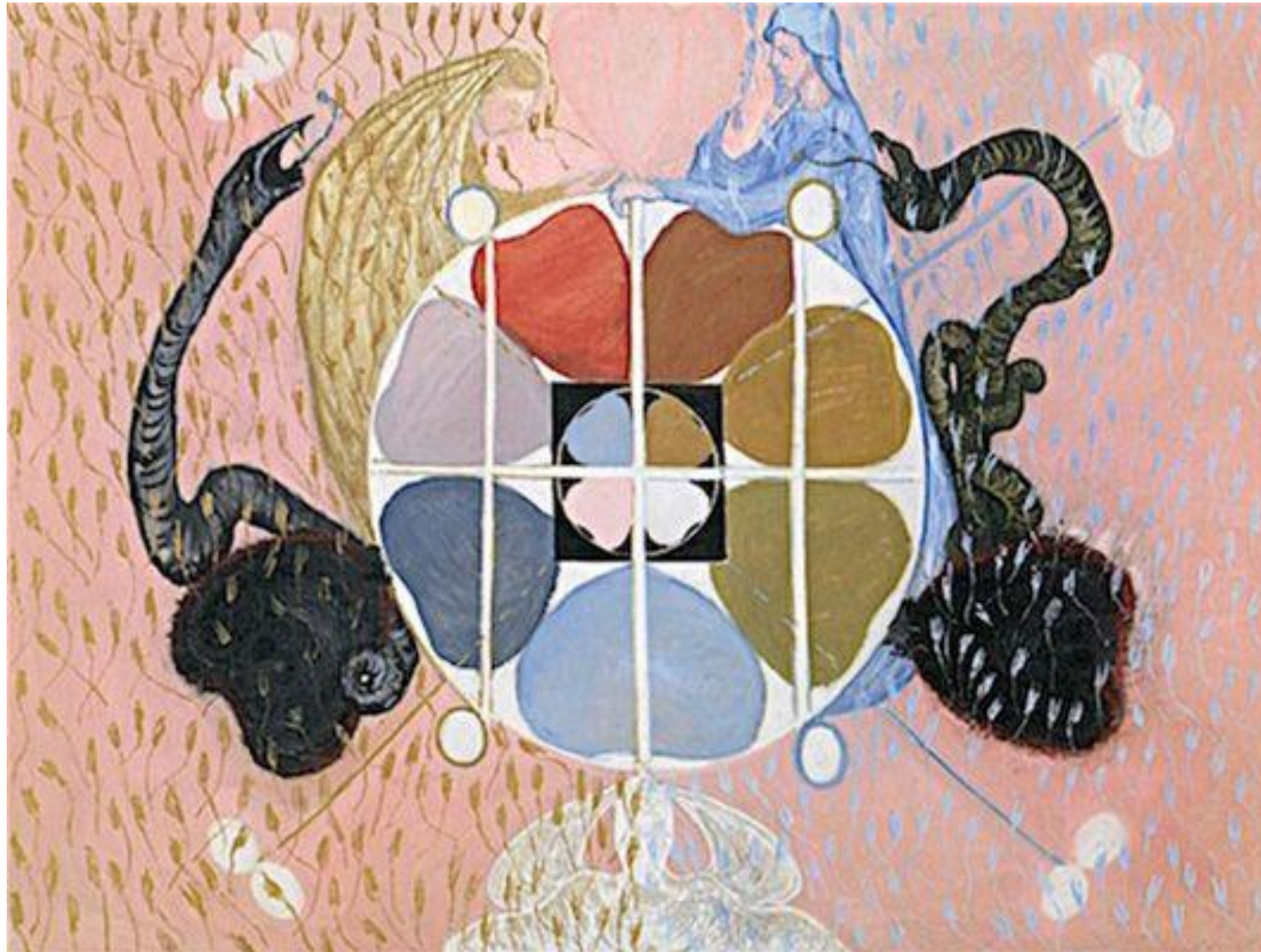
Gauguin Where Did We Come From? What Are We? Where Are We Going? 1897-8 4.5'x12'



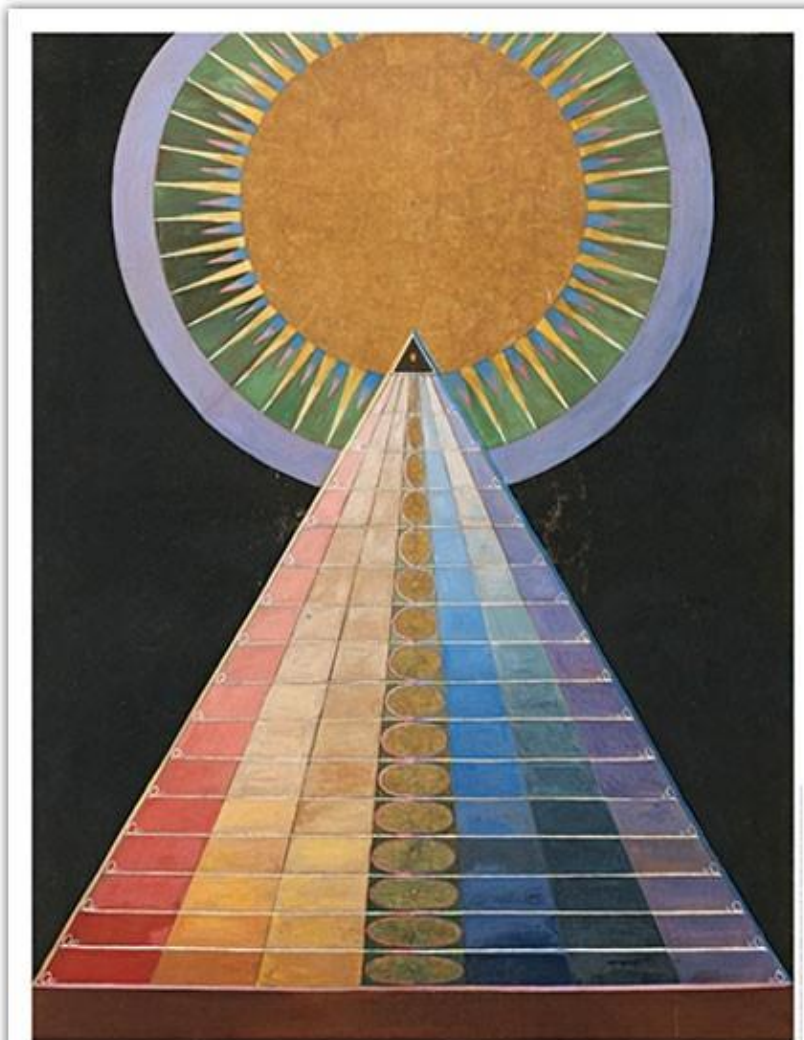
MUNCH THE DANCE OF LIFE 1899



Evolution #12 1908



Altarpiece # 1



Hilma af Klint
Paintings for the Future

GUGGENHEIM

Altarpiece #3



THE GUGGENHEIM FOUNDATION

How often does it feel like you're in a different world? The answer is: every day. The Guggenheim Foundation is a global leader in the arts, and we're always looking for ways to connect with you.



4.10.1901



Widened
Ingsfield



Widened
Ingsfield



4.10.1901

The Sidings



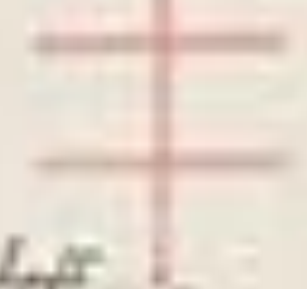


Skizze des Kessels mit dem Innereisen

18. 11. 1871

Die Skizze zeigt die innere Eisenwand

Die innere Eisenwand des Kessels



Die Skizze zeigt die innere Eisenwand des Kessels



Skizze des Kessels mit dem Innereisen

18. 11. 1871



Skizze des Kessels

27. 7. 1919.

Iris Pseudacorus

Serie I b n 1

Rechtlinien:

Geistige
Zurückhaltung

Glaube an den Schöpfer
 Ehrfurcht vor Gedanken
 Schmecht nach Fleißigkeit.
 (während auf & versucht vor die Gefühlkraft)

7. 7. 1919.

Rosa canina

Serie I b n 2

Rechtlinien:

Der Gemeinsinn der Menschheit.

8. 7. 1919.

Vicia cracca

Serie I b n 2

Rechtlinien:



Unternehmungslust
 in geistigen Beziehung
 welche das Herauf-
 bringen unseres
 Seelen- und Körper-
 organe herbeiführt.

11. 7. 1919.

Convolvulus arvensis

Serie I b n 3

Rechtlinien:

Entschlossenheit

11/10

Amethyst
Red
Orange

11/11



11/12

Amethyst
Red
Orange

11/13



11/14

11/15

11/16

11/17

Amethyst
Red
Orange

11/18

11/19

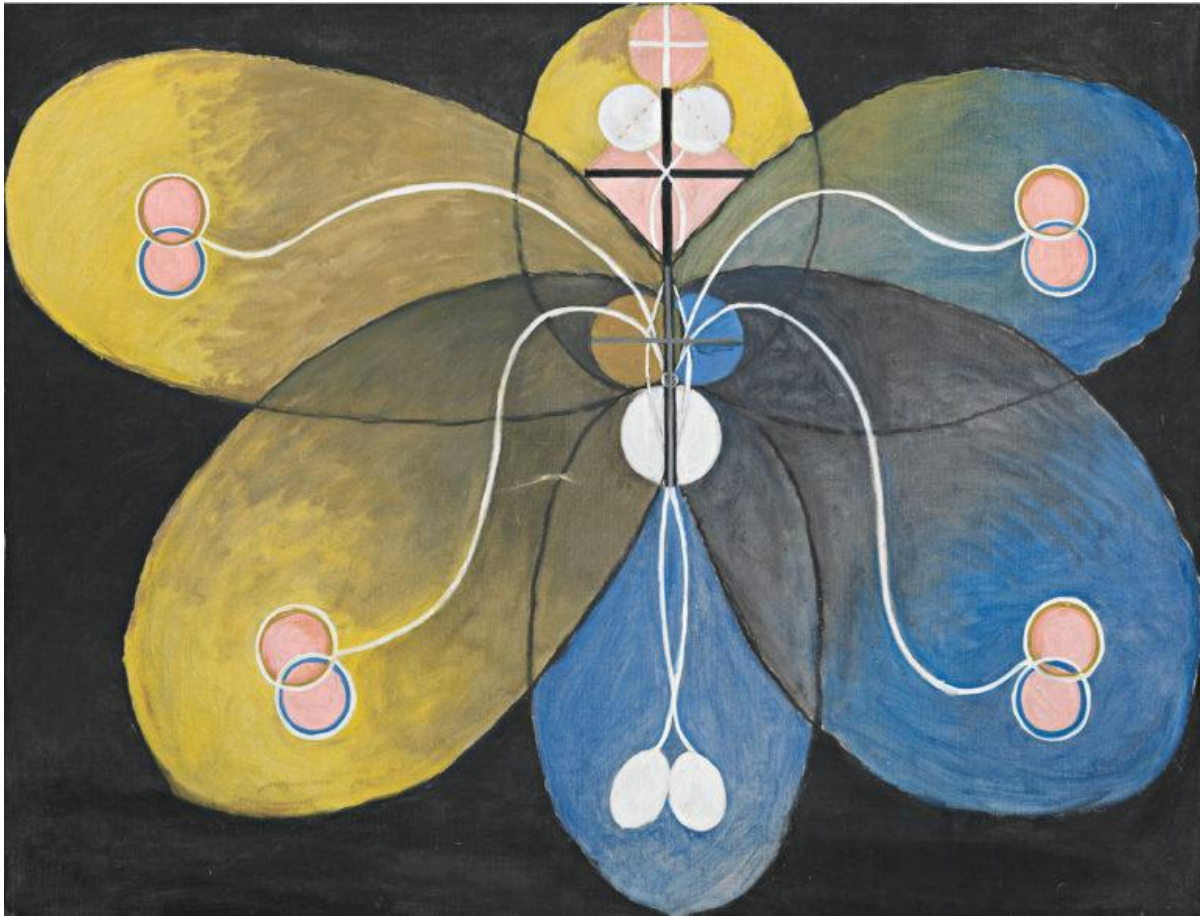


11/20

Amethyst
Red
Orange



Amethyst
Red
Orange



The Swan



The Swan 1914



The Swan



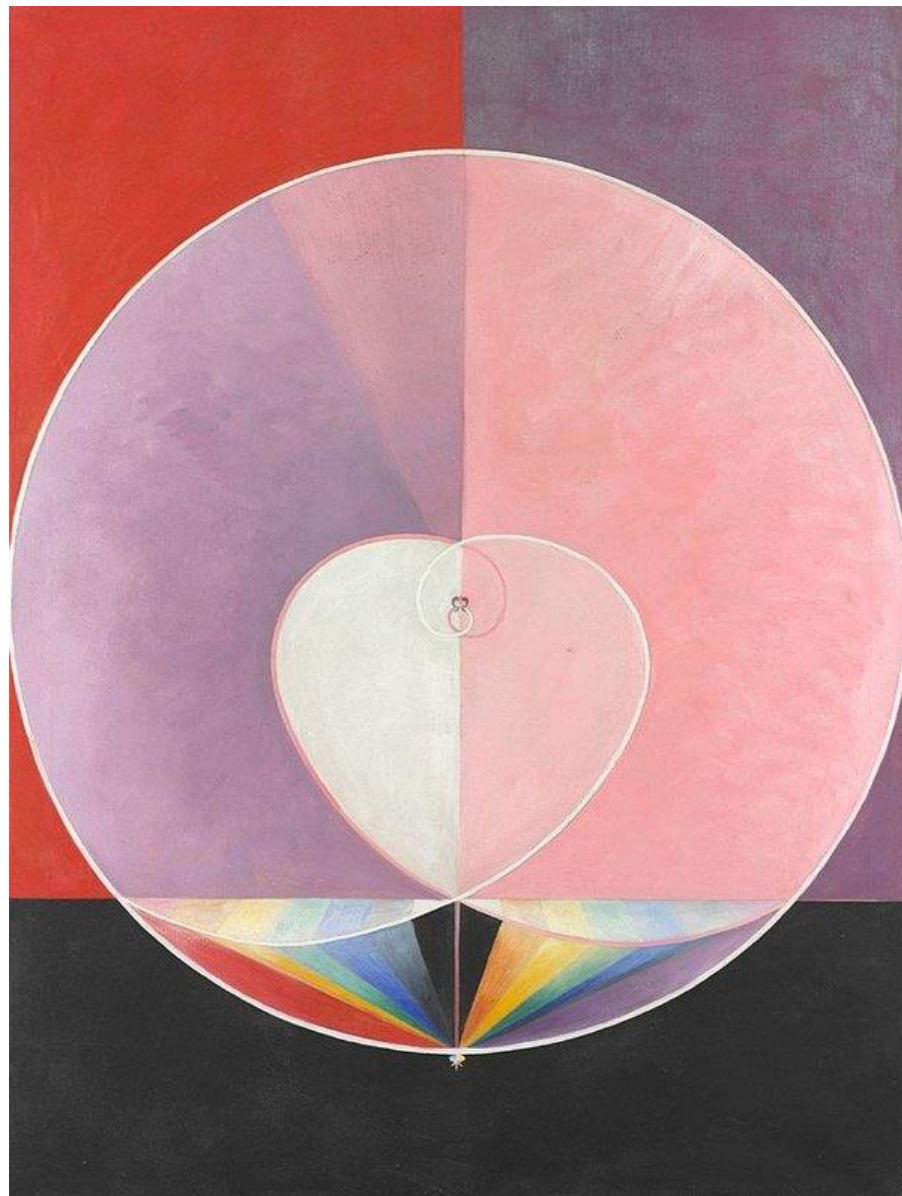
The Swan #12 1915



The Swan



Doves #1



Dove #2 1915



The Dove #3



The Dove #5

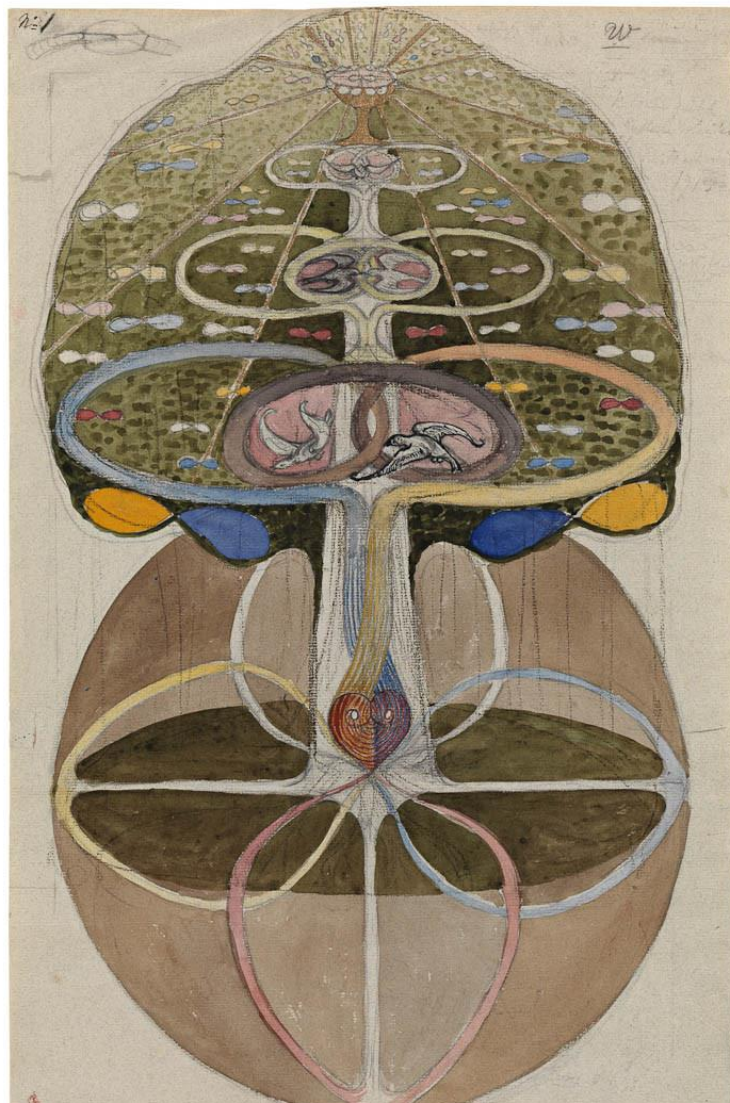




Tree of Knowledge

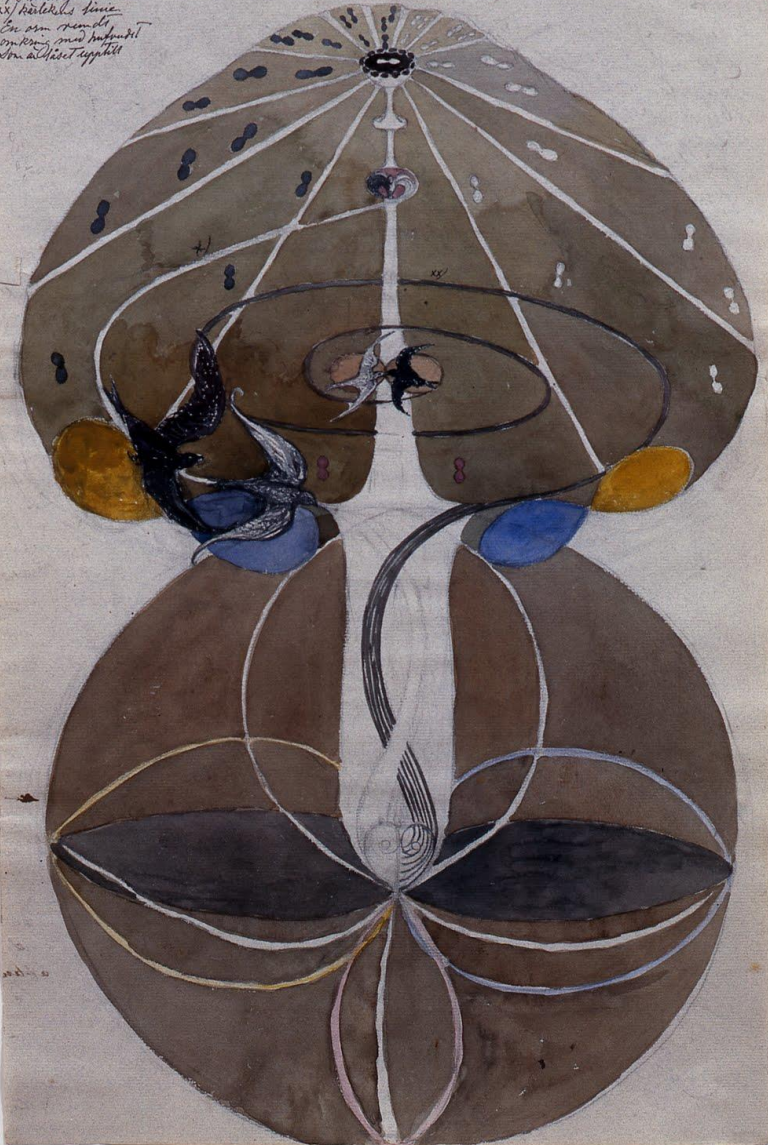


Tree of Knowledge 1913

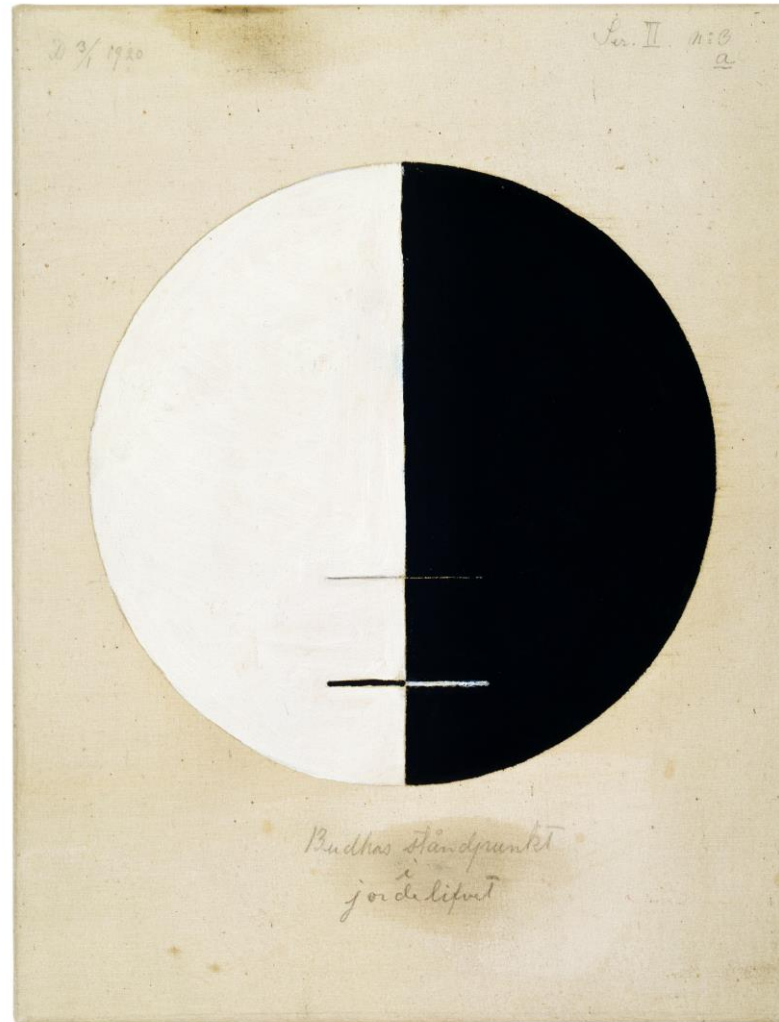


N:o 2
4/1 Panningens huse
22/1 Hættelens huse
En om pænder
en om med hængsel
en altsæt appelt

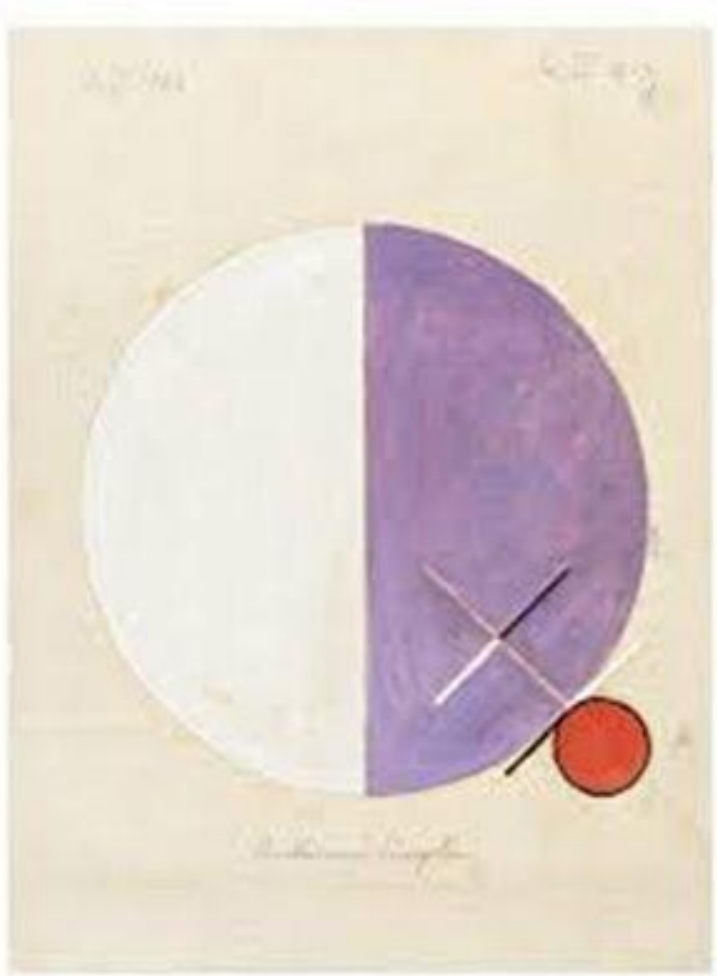
W series



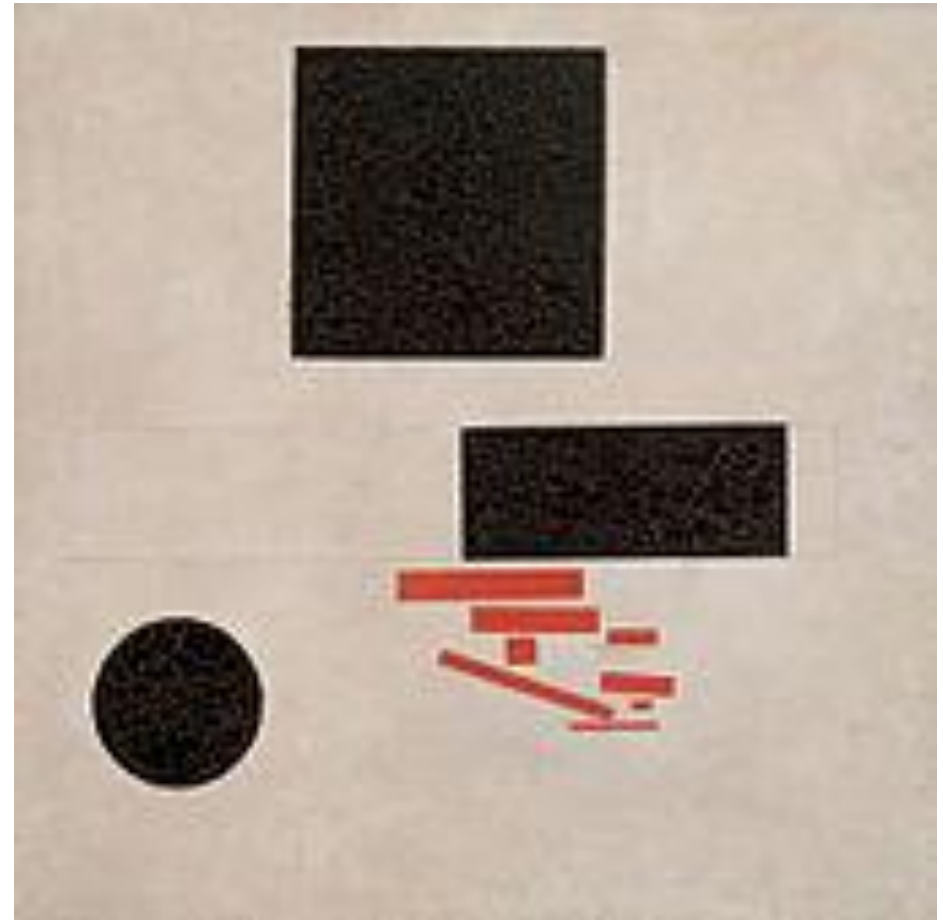
Buddha's Standpoint in the Earthly Life



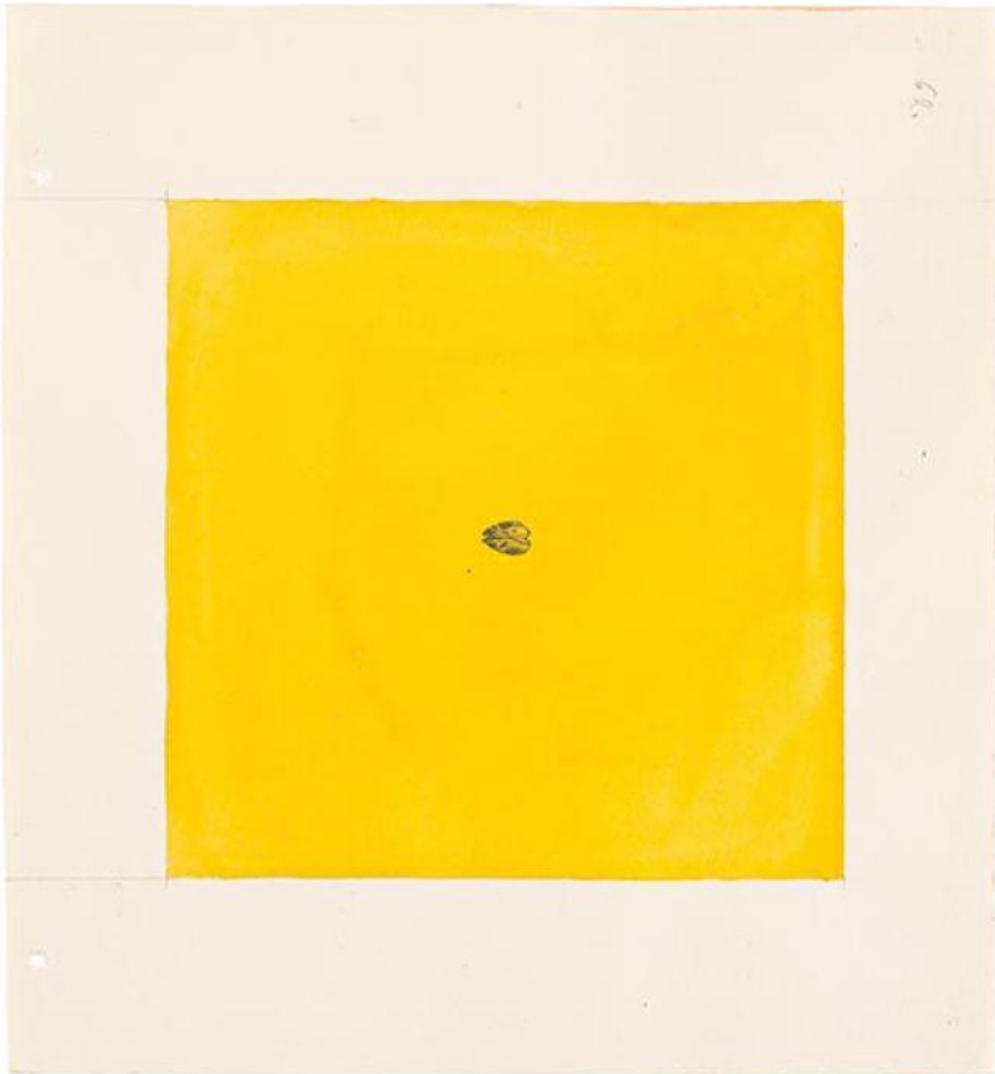
The Teachings of Buddha 1920



Malevich 1915-16



PARSIFAL SERIES 1916



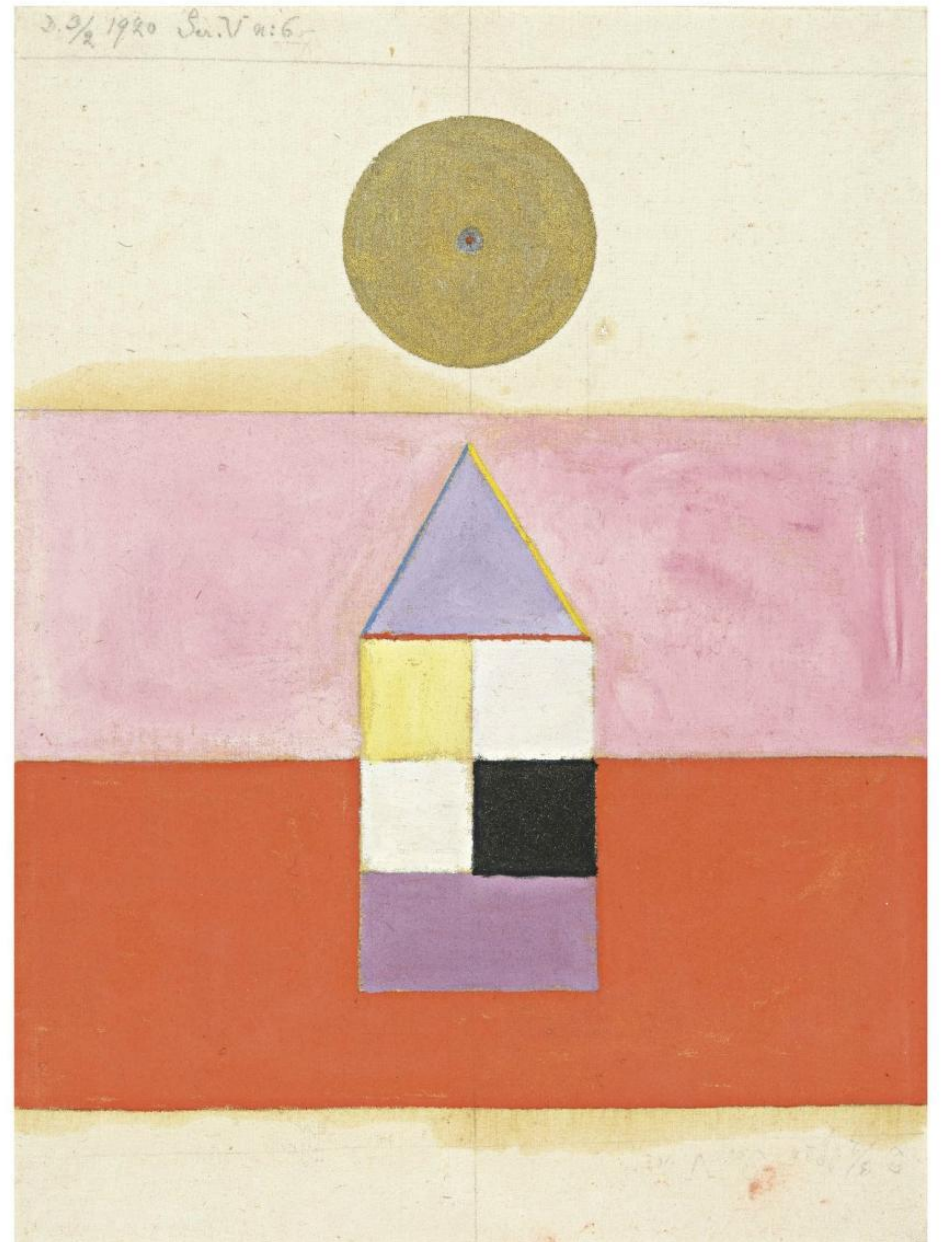
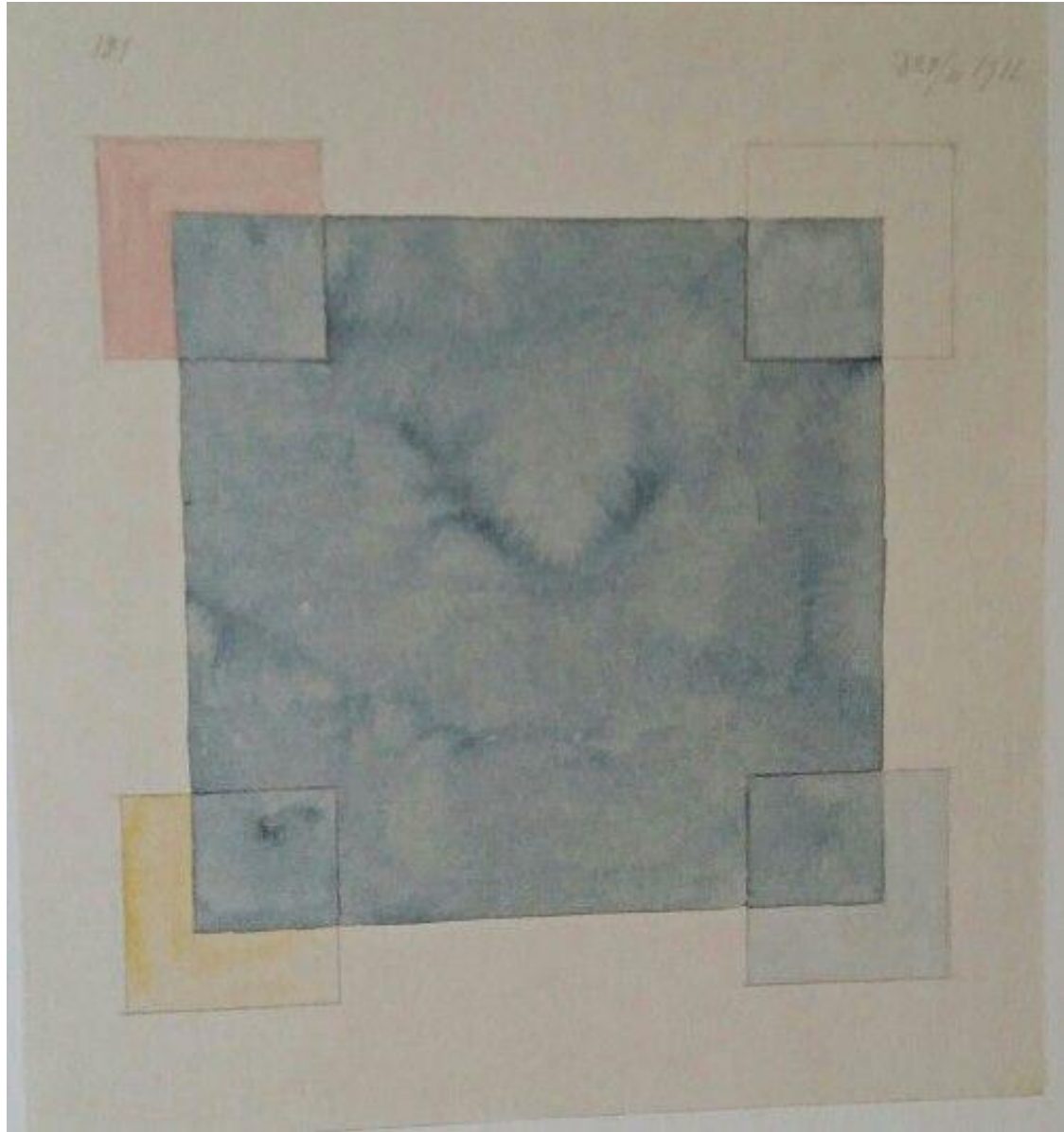
PARSIFAL SERIES 1916





Kandinsky Upward 1929







HILMA AF KLINT

—
—
—